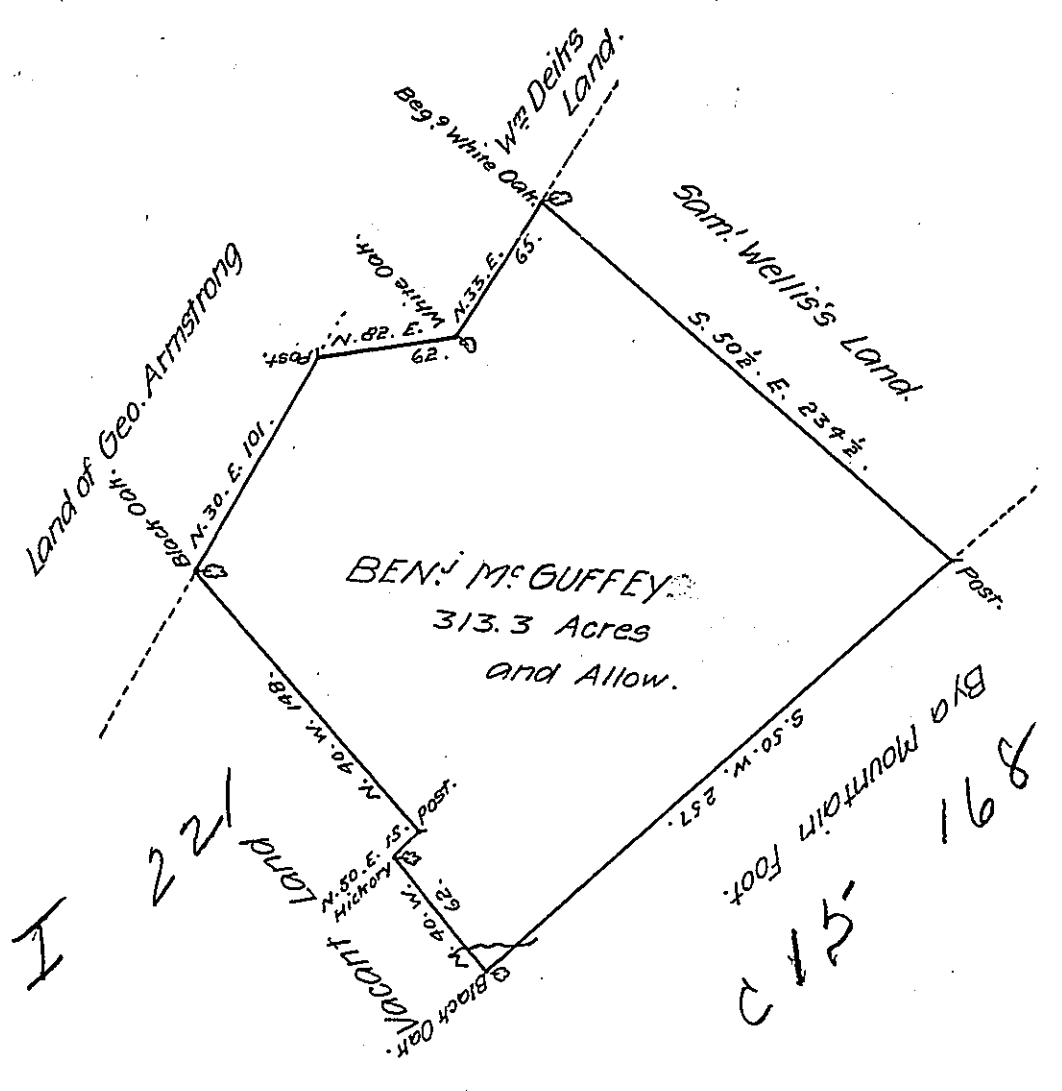


FORM NO 1.



The Draught of a Tract of Land called \_\_\_\_\_ situate in Wistacoquillis ~~County~~  
 Valley Cumberland County, containing three hundred thirteen Acres and fifty one  
 Perches with usual allowance for Roads, Survey'd the 20th day of January. Anno  
 Dom. 1769. In Pursuance of an Order of Survey to Benjamin M<sup>c</sup>Guffey bearing Date  
 at Philad<sup>a</sup> the 8th. day of April. Anno. Dom. 1767. N<sup>o</sup> 3387. P.

W<sup>m</sup> Maclay. — —

To John Luthens Esq<sup>r</sup>.  
 S. G. of Pennsylvania.

IN TESTIMONY that the above is a copy of the original remaining on file in  
 the Department of Internal Affairs of Pennsylvania, made  
 conformably to an Act of Assembly approved the 16th day of  
 February, 1833, I have hereunto set my Hand and caused  
 the Seal of said Department to be affixed at Harrisburg,  
 this twenty fifth day of July 1907.

*Henry Howell*  
 Secretary of Internal Affairs.